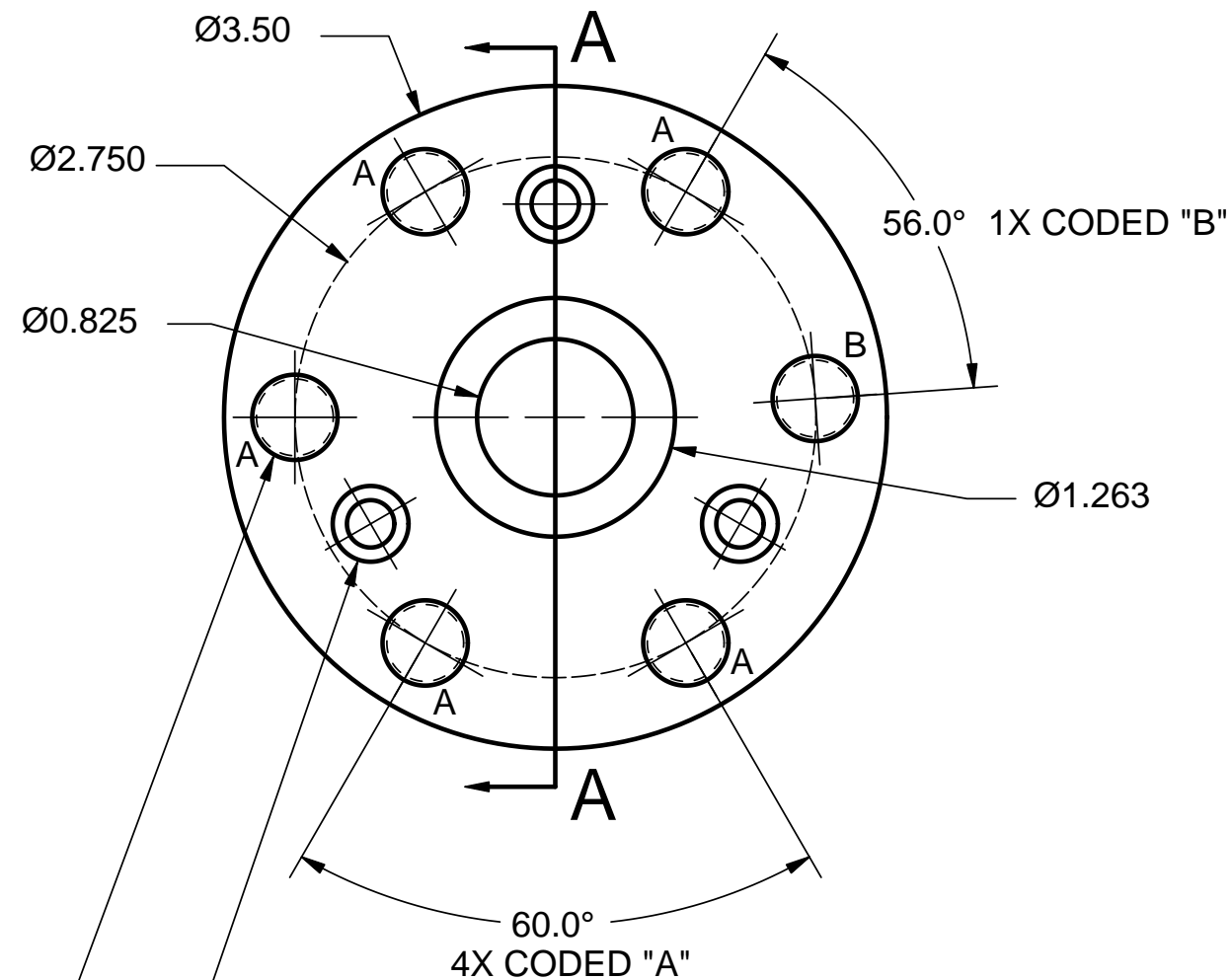
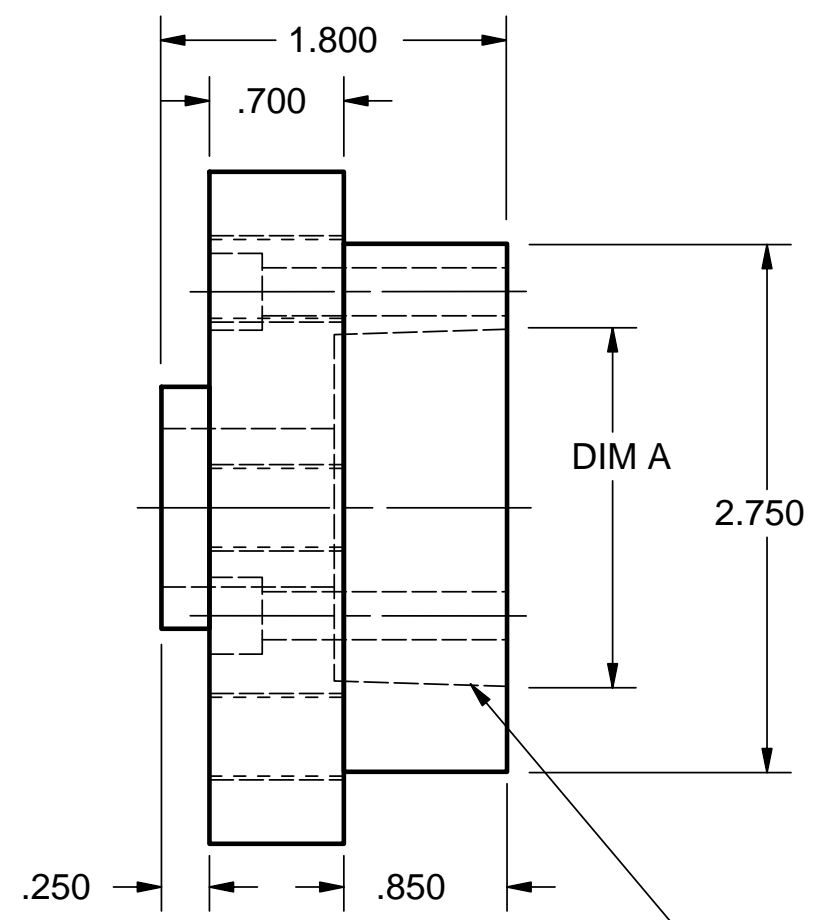


FLYWHEEL HUB



3 - HOLES DRILL 0.257 DIAM - THREADED 5/16-18
 COUNTERBORE 0.400 DIAM 0.275 DEEP
 EVENLY SPACED ON 2.250 DIA CIRCLE

6 - HOLES DRILL THROUGH - THREADED 11mm x 1.0
 THREAD DEPTH 0.65 INCH FOR FLYWHEEL BOLTS
 ON 2.750 DIAM CIRCLE
 5 HOLES AT 60° - 1 HOLE OFFSET AT 56°



TAPER 3/4 INCH PER FOOT
 0.900 DEEP
 TO MATCH DAYTON QT BUSHING SERIES SH
 DIM A TO ALLOW BUSHING TO INSERT WITHIN 1/8 TO 3/16

MATERIAL - STEEL ALLOY 4340

SHEET 1	Flywheel Hub - SH Bushing Ford FocusEV - MTX75
	CH Simon July 31, 2008 Scale: 1:1 Rev 5